

6x2 Tractor Unit

Ref: 28389

SCANIA R420 TOPLINE 6X2 TRACTOR UNIT -  
2008 - PX08 BEY

**£10,450**



## DESCRIPTION

<b>Make</b>		<b>Registration Number</b>	PX08 BEY
<b>First Registered</b>	01/03/2008	<b>Chassis Number</b>	XLER6X20005198355
<b>Engine Class</b>	Euro 4	<b>Mileage (Kms)</b>	969,308 Kms
<b>Gearbox</b>	Automatic	<b>MOT</b>	EXPIRED

## DETAILS

Scania R Series Topline Twinsleeper Cab C/w 4 Point Air Suspension.

Scania 420 Bhp Turbo Air To Air Charge Cooled Euro 4 Engine.

Scania 12 Speed Opticrusie Automatic Gearbox (With Clutch Pedal).

Scania Single Reduction Drive Axle C/w Diff Lock. Air Suspended Midlift/Steer Axle.

Ecas Drive Axle Air Suspension C/w Hand Held Controls.

Sliding Fifth Wheel C/w Run Up Ramps.

Full Disc Brake System C/w ABS/EBS And Switchable Traction Control.

Front Bumper Inset Mounted Fog/Spot Lights.

Twin Aluminium Fuel Tanks.

Aluminium Chassis Catwalk.

Exterior Sun Visor C/w Spotlights.

ISO Trailer ABS/EBS Susie Socket.

Rear Loading Lamp.

Full Air Deflector Kit C/w Cab Side Extensions.

Kelsa Hi Bar C/w Spotlights.

Kelsa Multi Bar C/w Spotlights.

Kelsa Beacon Bar C/w Amber Beacons And Air Horns.

Kelsa Lo Bar .

Kelsa Back Bar C/w Work Lights.

Isringhausen Heated/Air Suspended Drivers Seat C/w Adjustable Lumbar Support.

Electric Driver And Passenger Windows.

Electric Adjustable/Heated Mirrors.

Electric Sunroof.

Digital Climate Control C/w Air Conditioning.

Programmable Night Heater.

Scania CD/Radio Player.

Scania Underbunk Fridge.

Overhead And Underbunk Storage Compartments.

Cruise Control.

Adjustable Headlight Level Control.

Plated Weight : 40,000 Kgs.

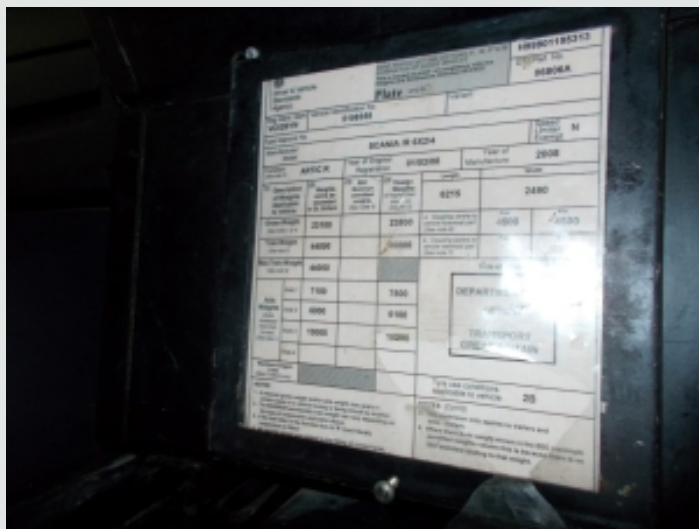
Design Weight : 46,000 Kgs.

Tested Until End : Expired.

Mileage As Shown : 969,308 Kms.

Digital Tachograph.

Registration Number: PX08BEY.



Spec Number: 28389.