

Crane Trucks

Ref: 30270

VOLVO FM12 6X2 26 TONNE DRAWBAR SPEC
BRICK/GRAB - 2005 - WX55 HRO

£11,750



DESCRIPTION

Make		Registration Number	WX55 HRO
First Registered	03/11/2005	Chassis Number	YV2JP40C65A608498
Engine Class	Euro 3	Mileage (Kms)	909,041 Kms
Gearbox	Semi-Automatic	MOT	November 2022

DETAILS

Volvo FM Series Sleeper Cab.

Volvo 460 Bhp Turbo Air To Air Charge Cooled
Euro 3 Engine.

Volvo Engine Brake (VEB).

Volvo I Shift Semi-Automatic Gearbox.

Volvo Single Reduction Drive Axle C/w Diff Lock.

Ecas Drive Axle Air Suspension C/w In Cab
Controls.

Air Suspended Rear Lift Axle.

20Ft Flatbed Body C/w Wood plank Flooring And
Side Netting.

Aluminium Side Guard Safety Rails.

Gearbox Driven Terex Atlas 125-2 Rear Mounted
Crane C/w Standing/Remote Controls, 2x
hydraulic Stabiliser Legs And Brick Grab
Attachment.

Vertical Exhaust Pipe.

Aluminium Fuel Tank.

PVCU Vertical Engine Air Intake.

VBG Drawbar Coupling C/w Air And Electrical
Susie Connections.

N/s Chassis Mounted Storage Locker.

Exterior Sun Visor.

Roof Mounted Amber Beacon Bar.

Front Mounted Kelsa Multi Bar C/w Spotlights.

Isringhausen Air Suspended Drivers Seat C/w
Adjustable Lumbar Support.

Electric Driver And Passenger Windows.

Electric Adjustable Heated Mirrors.

Pop Up Sunroof.

Webasto Night Heater.

Air Conditioning (Not Tested).

RDS CD/Radio Player.

Cruise Control.

12v Auxiliary Power Socket.

Volvo Drivers Display.

Overhead Storage Compartments.

Plated Weight : 26,000 Kgs.

Design Weight : 27,000 Kgs.

Train Weight : 44,000 Kgs.

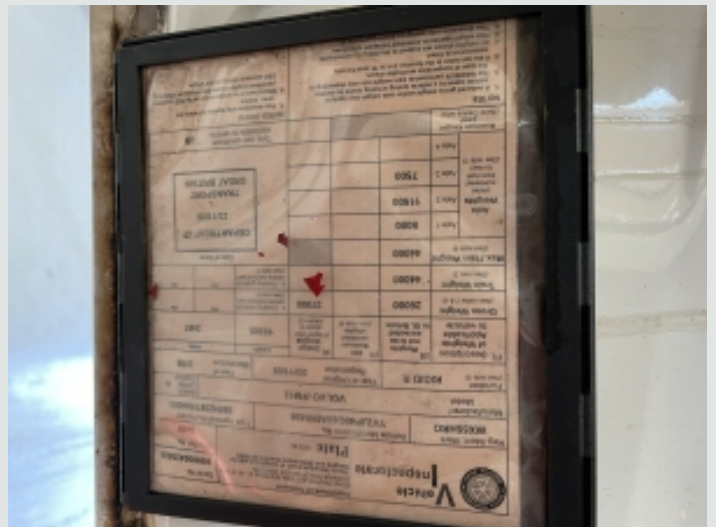
Tested Until End : November 2022

Mileage As Shown : 909,041 Kms.

Analogue Tachograph.

Wheelbase : 4.9 Mtrs.

Vehicle Length: 10.1 Mtrs.



Vehicle Width: 2.5 Mtrs.

Vehicle Height: 4.0 Mtrs.

Registration Number: WX55HRO

Spec Number: 30270