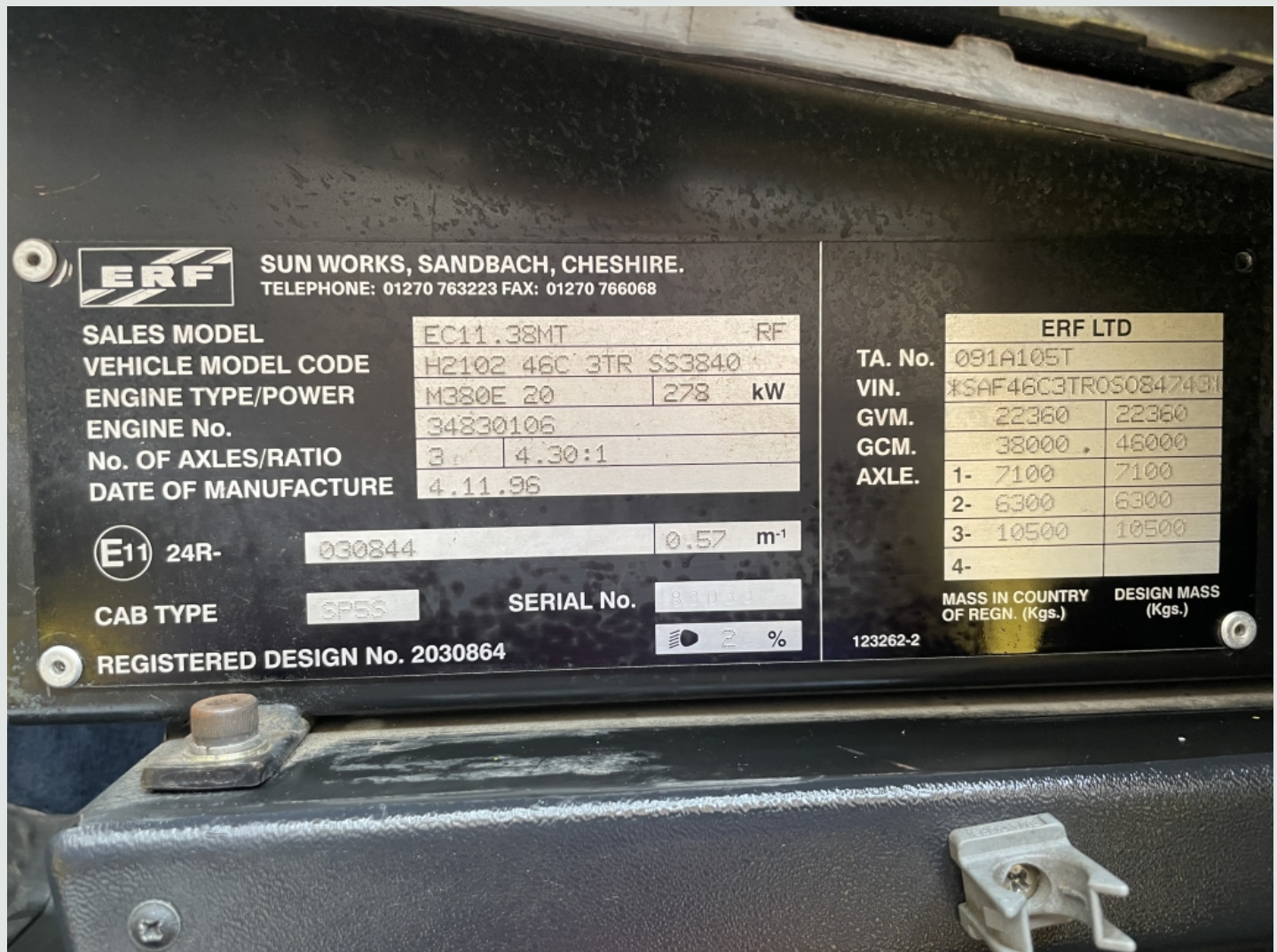


6x2 Tractor Unit

Ref: 31085

ERF EC11 6X2 TRACTOR UNIT - 1997 - P799 LFL

£8,950



DESCRIPTION

Make		Registration Number	P799 LFL
First Registered	14/02/1997	Chassis Number	SAF46C3TROS084743
Engine Class	Euro 3	Mileage (Kms)	1,250,672 Kms
Gearbox	Manual	MOT	Expired

DETAILS

ERF EC Series Sleeper Cab.

Cummins M11 380 Bhp Turbo Air To Air
Chargecooled Euro 2 Engine.

Eaton TSO 12 Speed Twin Splitter Gearbox.

Gearbox driven Tipping Hydraulics C/w Chassis
Mounted aluminium Hydraulic Tank And In Cab
Controls.

Rockwell S180E Single Reduction Drive Axle c/w
Diff Lock.

Hendrickson Drive Axle Air Suspension C/w
Controls.

Air Suspended Midlift Axle.

Sliding Fifth Wheel C/w Run Up Ramps.

Aluminium Chassis Catwalk.

Full Air Deflector Kit C/w Cab Side Extensions.

PVCU Vertical Engine Air Intake.

XGS Interlube Chassis Autolube System.

Rear Loading Light.

Iso Trailer ABS Susie Socket.

Isringhausen Air Suspended Drivers Seat c/w
Adjustable Lumbar Support.

Webasto Airtop 2000 Night Heater.

Pop Up Sunroof.

Heated Mirrors.

Clarion RDS Radio/Cassette Player.

Air Conditioning (Not Tested).

Cruise Control.

Overhead And Underbunk Storage Lockers.

12v Auxiliary Power Socket.

Plated Weight: 44,000 Kgs.

Design Weight: 46,000 Kgs.

Tested Until End : Exoired

Mileage As Shown: 1,250,672 Kms.

Registration Number: P799LFL

Spec Number: 31085

